

# In-Line Flashing Station



- Multiple flash programmer options
- Up to 40 devices in parallel
- Bottom and top contact
- High PCB transfer speed
- Contactless PCB stop
- ESD safe
- Transport direction L=>R, R=>L
- No compressed air required
- CE approved
- Fixture with up to 920 pins Mass Interconnect

## Fast and reliable flash programming

The In-Line Flashing Station is designed with the most innovative numeric movement control technologies and ensures reliability and precision for its entire long life. It does not require compressed air supply.

Width transport adjustment is automatic and determined directly by the program, the product P/N or the input conveyor position. It operates with low cost fixtures and equipped mass interconnect with guaranteed connections for more than 20.000 inserts suitable for data transmission speeds of up to 100 MHz.

The platform integrates as standard a 2D code reader mounted on the input side for reading on the top side of the PCB, with guide and motor for automatic position adjustment. It also includes an Ethernet switch with PoD for 16 ports.

Additional accessories: additional code reader with automatic position adjustment for the lower side.

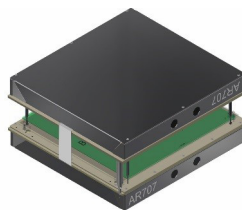
SMEMA-9851 and IEC-SMEMA-Hermes 9852 interface in addition to CAN bus for data transfer of the width to previous and following machines.

	Values	Units
<b>Handler technical specifications</b>		
Press down force	2.000	N
Transport speed	100 ... 1000	mm/s
Transport height	940 ... 980	mm
PCB exchange time	3 ... 4	s
Change over time for fixture (top and bottom)	< 60	s
19" usable mounting space	20	U
Energy requirements	L-N 200...240V 50-60	
Color	RAL 7035 and RAL 4006	
Dimensions (LxDxH)	765 x 1100 x 2000	mm
Weight	275	kg
<b>PCB technical specifications</b>		
PCB width (according to the fixture)	50 ... 310	mm
PCB length (according to the fixture)	50 ... 430	mm
PCB thickness	0,6 ... 3	mm
Component height on top side	<95	mm
Component height on bottom Side	<25	mm
PCB transport side edge	>3	mm
PCB weight	< 4000	g

## Fixture

The 6TL AR707 Fixture Cassette Kit includes the following:

- Pin plate (EP105): 450x350mm
- 20 push finger 90
- 20 spacer
- Hold down plate



P/N AR707 450x350 mm

## Recommended flash memory programmers



P/N FlashRunner Programmer



P/N WriteNow Programmer

## Order information

Item	Part Number
In-line Flash Programming	<b>AR302</b>
Fixture Kit AR707 (450x350mm) including cycles counter and laser stopper kit	<b>AR707</b>
90 mm PCB top Pushers kit and counterpart supports (10 units)	<b>H72008930</b>
Scanner kit with automatic position adjustment w/ SR-751 and PoE connection cable for bottom side	<b>AP735</b>
CAN bus light tower (red, yellow, green and flashing green) w/magnetic support	<b>H79006002</b>
FlashRunner 8-Ch	<b>AM977</b>
Algocraft WriteNow 8-Ch	<b>WNPRG08A</b>
Programming port wiring (from programmer to RCV module)	<b>To be requested</b>
Flash programmer driver license	<b>To be requested</b>
Return OEM conveyor	<b>AL372</b>

## More related products

Item	Part Number
Transfer conveyor with automatic width adjustment 765 mm length	<b>AM307</b>
Magazine unloader	<b>AQ156</b>
Magazine loader	<b>AN100</b>
Multi-magazine loader	<b>AM892</b>
Robotized lift conveyor	<b>AN521</b>